

**CONSTELLATION  
THEATRE  
COMPANY** SEASON 17



# ORLANDO

**BY VIRGINIA WOOLF  
ADAPTED BY SARAH RUHL**

**OCT 12 - NOV 11**

# THANK YOU FOR JOINING US ON THIS ADVENTURE!

Virginia Woolf and Sarah Ruhl are two amazing artists known for their ability to capture the human experience and share it through beautiful language and imagery. We couldn't resist selecting this play which so elegantly highlights the range of that experience. *Orlando* provides us with another opportunity to share with you a big vision in a small space. Using five amazingly talented performers, we give you a story that spans five centuries, a wide array of characters, and multiple genders. We hope this story will excite you, inspire you, and maybe even transform you.

If you've enjoyed Constellation's productions in the past, it should come as no surprise that we continue to focus on stories that are driven by the spectrum of humanity. We are dedicated to opening doors that guide you into fascinating ideas, fantastical dreams, and magical myths. We hope you'll step through that door. We hope you'll immerse yourself in this exquisite story. We hope you leave the theatre today a little different than you were when you arrived. That's the power of theatre – the ability to show you a different way of being; the ability to transform you.

We love getting to share this experience with you. Using these stories to convey such big ideas drives us as a company every day. The fact that you're here helps us know that we're doing this effectively. The fact that your votes helped us to be a finalist in Washington City Paper's Best of DC 2023 helps us know it too! We can't do what we do without you; your generosity, your support, and your love. If you enjoy our stories, help us continue telling them. Support Constellation Theatre Company with a tax-deductible donation – every dollar enables us to keep telling stories that are big, powerful, and impactful. Enjoy the show, make a donation, and become a part of the magic.



**ANDERSON WELLS**  
Managing Director, Constellation Theatre Company



# ORLANDO

by Virginia Woolf  
Adapted by Sarah Ruhl

*ORLANDO* was commissioned by Joyce Piven and was first produced at the Piven Theater Workshop, directed by Joyce Piven. It was subsequently produced at the Actor's Gang in Los Angeles, produced by Tim Robins, and directed by Joyce Piven. It was produced in New York at Classic Stage Company, produced by Brian Kulick, directed by Rebecca Taichman.

## CAST

**Mary Myers** ..... Orlando  
**Edmée - Marie Faal** ..... Sasha + Chorus  
**Christian Montgomery** ..... Marmaduke + Chorus  
**Alan Naylor\*** ..... Queen Elizabeth + Chorus  
**Arika Thames** ..... Archduchess Harriet + Chorus

## UNDERSTUDIES

**Madalaina D'Angelo** ..... Orlando  
**Tierra Burke** ..... Sasha + Archduchess Harriet + Chorus  
**Ben Lauer** ..... Queen Elizabeth + Marmaduke + Chorus

## CREATIVE TEAM

**Nick Martin** ..... Director  
**Sarah Beth Hall** ..... Scenic Designer  
**Kitt Crescenzo** ..... Costume Designer  
**Venus Gulbranson^** ..... Lighting Designer  
**Madeline 'Mo' Oslejsek** ..... Sound Designer  
**Amy Kellett** ..... Props Designer  
**Sarah Beth Oppenheim** ..... Movement & Intimacy Director  
**Tori Schuchmann** ..... Production Stage Manager



\*Member, Actors' Equity Association



^Represented by Local USA 829

## PRODUCTION TEAM

<b>Francesca Chilcote</b> .....	Associate Director
<b>Hansin Arvind</b> .....	Assistant Stage Manager
<b>Samuel Klaas</b> .....	Technical Director
<b>Michael Tsaltas</b> .....	Assistant Technical Director
<b>Maria Mills</b> .....	Assistant Production Manager
<b>Jessica Utz</b> .....	Assistant Costume Designer
<b>Yaritza Pacheco</b> .....	Scenic Charge Artist
<b>Caroline Austin</b> .....	Scenic Artist
<b>Megan Holden</b> .....	Scenic Artist
<b>Julian Cordova</b> .....	Assistant Lighting Designer
<b>Reed Simiele</b> .....	Head Electrician
<b>E-hui</b> .....	Light Board Programmer
<b>Lillian Moki</b> .....	Light Board Operator
<b>Courtney Naughton</b> .....	Sound Board Operator
<b>Garrett Parker</b> .....	Audio Engineer
<b>Damien Shard</b> .....	Wardrobe

Carpenters  
**L Bruce**  
**Tara Del Prete**  
**Justin Drew**  
**Alexander Kim**  
**Ari Knauer**  
**Melvin Knight**  
**Alex Kozlov**  
**Cassie Medinets**  
**Bijon Simpson**

Hedge Trimmers  
**Gifty Amponsen**  
**Noel Best**  
**Tamieka Chavis**  
**Lauryn Ciardullo**  
**Jadah Clay**  
**Sky Davis**  
**Trinity Garrison**  
**Tyler Lang**  
**Chloe Lomax**  
**Natasha Sanchez**  
**Tori Schuchmann**  
**Trevion Walker**  
**Jordan Williams**  
**Yazima Williams**  
**Kennedi Woods**

Electricians  
**Katherine Darnell**  
**E-hui**  
**Dazinsky Muscadin**  
**Alex Anthes Rojas**  
**Simon Sinnreich**

Special Thanks  
**Ben Harvey**



**Allison Arkell Stockman** [she/her] (Founding Artistic Director) won the Helen Hayes Award for Outstanding Director of

a Musical (Helen Production) in 2016 for her work on *Avenue Q*. She has directed 33 Constellation productions including *The School for Lies*, *Incognito*, *Mysticism & Music*, *Children of Medea*, *The White Snake*, *Master and Margarita*, *The Caucasian Chalk Circle*, *The Wild Party*, *The Arabian Nights*, *Urinetown*, *Journey to the West*, *The Fire and The Rain*, *ABSOLUTELY! {perhaps}*, *The Love of the Nightingale*, *36 Views*, *Gilgamesh*, *Taking Steps*, *Metamorphoses*, *The Ramayana*, *The Green Bird*, *Women Beware Women*, *Three Sisters*, *A Flea in Her Ear*, *A Dream Play*. Allison has directed readings and workshops for Theater J and the Kennedy Center. A Drama League Directing Fellow and a member of the Lincoln Center Theater Directors Lab, Allison holds an MFA in Directing from Carnegie Mellon School of Drama and a BA in Comparative Religion from Princeton.



**Anderson Wells** [they/ them] (Managing Director) has been working as a performer, producer, teacher, and administrator

in the DC theatre scene since 2013. Prior to joining the Constellation team, they spent several years as Studio Acting Conservatory's Education Manager. They have also worked with Arena Stage, Arts on the Horizon, Brave Spirits Theatre, Encore Stage and Studio, The Hub, The Klunch, Pinky Swear Productions, Rep Stage, Silver Spring Stage, Solas Nua, Studio Theatre, Treehouse for Creative Kids, and The Welders. Anderson is also the Founding Artistic Director of Highball Productions. They can be found performing across the country as their drag persona, Vagenesis. As a drag artist, they have won multiple titles including becoming the first ever National Bearded Empress.

**Nick Martin**, Associate Artistic Director  
**Samuel Klaas**, Production Manager  
**Julia Rabson Harris**, Patron Services Manager  
**AJ Williamson**, Marketing Manager

## BOARD OF DIRECTORS

**Scott Chatham**  
 President

**Kenyatta T. Brunson**  
 Vice President

**Ian Shuman**  
 Treasurer

**Scott Hahn**  
 Secretary

**Robert Bacon**  
**Michael L. Burke**  
**Erin D. Drake**  
**Matt Haynie**  
**Deborahonyaa Sengupta**  
**Allison Arkell Stockman**  
**Keiko K. Takagi**  
**Anderson Wells**  
**Rew Zukosky**

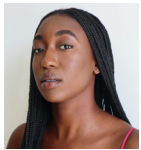
**i** RUN TIME: 90 MINUTES, NO INTERMISSION

For the safety of the performers, we kindly ask that you do not take photographs, video, or audio recording during the show. Please silence all electronic devices.



**Mary Myers** [she/her] (Orlando) has been working in DC theatre for more than a decade! She was last seen at Constellation in

*Melancholy Play* (Helen Hayes Nomination: Ensemble). Select credits include: Round House Theatre: *Jennifer, Who Is Leaving (u/s)*; Faction of Fools (Company Member): *Love Like Tuesday*; NextStop Theatre Company: *45 Plays for 45 Presidents* (Helen Hayes Award: Supporting Actress); Pointless Theatre Company: *Rhinocéros, King Ubu*; Adventure Theatre: *The Velveteen Rabbit*; Nu Sass Productions (Company Member): *Can't Pay, Won't Pay, Marx in Soho* (Helen Hayes Nomination: Lead Actress). She also performed *Marx in Soho* at the 2019 Edinburgh Fringe Festival. BA in Theatre: The College of William & Mary; Physical Theatre Intensive: St. Mary's University, Twickenham, England. [marymyersactor.com](http://marymyersactor.com)



**Edmée - Marie Faal** [she/her] (Sasha + Chorus) is an artist and theatre maker in the Washington DC area. She is a recent graduate of

American University's Theatre Performance Program and the British American Drama Academy. Additionally, as the 2019 Allen Lee Hughes Community Engagement and Outreach intern, she was trained to co-instruct Voices of Now, Arena Stage's devised theater for social change program. Her local credits include: Imagination Stage: *Aquarium, P.Nokio, Corduroy*. She is excited to finally be working with Constellation Theatre Company! [edmeemariefaal.com](http://edmeemariefaal.com), Socials: @edmee.marie



**Christian Montgomery** [he/him] (Marmaduke + Chorus) Local credits include Constellation Theatre Company: *Little Shop of*

*Horrors* (Helen Hayes Nom.), *Melancholy Play, The Wild Party, Urinetown, Avenue Q*; Round House Theatre: *Spring Awakening*; The Keegan Theatre: *Seussical, American Idiot* (Helen Hayes Nom.), *Next to Normal* (Helen Hayes Nom.), *Six Degrees of Separation, HAIR*; Olney Theatre Center: *AD16, Elf*; Monumental Theatre Company: *tick, tick... BOOM!* (Helen Hayes Nom.), *Be More Chill* (Helen Hayes Nom.); ATMTC; *You're A Good Man Charlie Brown, Alexander...Very Bad Day*; Studio Theatre: *Carrie the Musical, Wig Out*; Signature Theatre: *Jesus Christ Superstar*; Toby's: *Hunchback of Notre Dame, Mary Poppins, Memphis*.



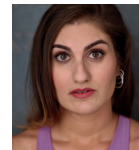
**Alan Naylor** [he/him] (Queen Elizabeth + Chorus) could not be happier to join Constellation for the first time. He has been

seen throughout DC at: Creative Cauldron: *Jacques Brel* (Helen Hayes Award), *Monsters, Ruthless, Wizard of Oz*; Studio Theatre: *Silence! The Musical*; Signature Theatre: *A Little Night Music*; Olney Theatre Center: *Comedy of Tenors, On the Town, Annie, Sweeney Todd, Candide, Fiorello*; Rep Stage: *Souvenir*; WNO: *Proving up*; Adventure Theatre: *Caps for Sale*. In addition to his work, as an actor he produces numerous cabarets and freelances as a concert piano technician and audio engineer. Alan has an MM from Washington University in St. Louis and a BM from St. Olaf College.



**Arika Thames** [they/she] (Archduchess Harriet + Chorus) is a DC-based actor making their Constellation Theatre Company debut.

She has recently performed with Rorschach Theatre: *Sometimes the Rain, Sometimes the Sea, Chemical Exile: Synthesis*; Washington Stage Guild: *The Good Doctor*; Prologue Theatre: *The Revolutionists* (Helen Hayes Nomination, Outstanding Supporting Performer). Arika received her undergraduate degree in Theatre and Gender, Sexuality, & Women's Studies from The College of William & Mary.



**Madalaina D'Angelo** [she/her] (US Orlando) is excited to be back with Constellation after having assistant choreographed

*Little Shop of Horrors* in 2019. Previous regional credits include Manchester Shakespeare in the Woods: *Hamlet, The Tempest*; Chesapeake Shakespeare Company: *A Christmas Carol*; Shakespeare Theatre Company: *Romeo and Juliet*; STC/ Pemberley Productions US Tour: *An Inspector Calls*; The Media Theatre: *Carousel*; Cape May Stage: *Red Hot Patriot, The Rock n Roll Summer*. Educational credits: *The Winter's Tale, Julius Caesar*, and Aaron Posner's *The Cherry Orchard*. Madalaina has her BM from The Rome School of Music, Drama and Art at CUA and her MFA from Shakespeare Theatre Company's Academy for Classical Acting.



**Tierra Burke** [she/her] (US Chorus) is excited to work with Constellation Theatre Company again after understudying for *The*

*School For Lies*. She recently performed as Captain Everything in Interact Story Theatre's *The Hero of Everything*. Tierra was born and raised in Maryland and attended Duke Ellington School of the Arts, as well as DePaul's The Theatre School. She is currently on the board of Droom Theatre Company and has most recently co-directed a docudrama, in collaboration with The Department of Behavioral Health, entitled *It Could Be You*.



**Ben Lauer** [he/him] (US Chorus) is excited to join Constellation Theatre Company again after performing in *The Master*

and *Margarita* and *The Skin of Our Teeth*. Local credits include Faction of Fools (Company Member): *Love Like Tuesday, Missed Connections, The Great Commedia Hotel Murder Mystery, Henry V, The Merchant of Venice*; NextStop Theatre Company: *Pride and Prejudice, Richard III*; Goethe-Institut: *Wander*; Prince George's County Shakespeare in the Parks: *The Tempest, Macbeth, A Midsummer Night's Dream, As You Like It, Romeo and Juliet*; Ally Theatre Company: *Clover*; dog&pony dc: *Sense-Able*; Source Festival: *a love story*; and others.



## CREATIVE TEAM



**Nick Martin** [he/him]  
(Director) Local credits include Constellation Theatre Company: *Little Shop of Horrors* (Helen Hayes

Nominations - Direction and Production), *Melancholy Play: A Contemporary Farce* (Helen Hayes Awards - Direction and Production); Capital Fringe: *Andromeda Breaks*; Source Festival: *Perfect Arrangement*. Assistant credits include: Olney Theatre Center: *Carmen: An Afro-Cuban Jazz Musical*; Signature Theatre: *Cabaret, Sunday in the Park With George, Beaches, Crossing*; Constellation Theatre Company: *The Last Five Years* (Associate), *The Skin of Our Teeth, Peter and the Starcatcher, Urinetown*. On occasion Nick also acts and has worked with Pointless Theatre, Rorschach Theatre, Imagination Stage, and Shakespeare Theatre Company. Education: BA, The College of William & Mary.



**Sarah Beth Hall** [she/her]  
(Scenic Designer) is a freelance scenic designer based in the greater DC area. Select local credits include: Rorschach

Theatre: *Sometimes the Rain, Sometimes the Sea*; NextStop Theatre Company: *Frankenstein*; Adventure Theatre: *Make Way for Ducklings*. Select regional credits include: Shakespeare Theatre of New Jersey: *The Rose Tattoo, The Caretaker*; The Cape Playhouse: *God of Carnage*; Adirondack Theatre Festival: *The Hobbit*; Cincinnati Shakespeare Company: *Little Women*; Know Theatre of Cincinnati: *Neil Gaiman's Neverwhere, Listen for the Light, SuperTrue, The Fisherman's Wife*; Summer Rep Theatre Festival: *Bonnie & Clyde, Pippin, Mamma Mia!*; University of Rochester: *Metamorphoses*. [sarahbethhalldesign.com](http://sarahbethhalldesign.com)



**Kitt Crescenzo** [she/her]  
(Costume Designer) is a Baltimore based costume designer and company member of Stillpointe

Theatre Initiative. She is excited to be working again with director Nick Martin and the Constellation team. Previous Constellation credits: *Melancholy Play* (designer), *Little Shop of Horrors* (assistant designer). Recent credits: Woolly Mammoth Theatre Company: *Mama and the Full Scale Invasion* (associate designer); Sisters Freehold: *The Codeswitch* (designer); Shakespeare Theatre Company: *Here There Are Blueberries* (associate designer); Stillpointe Theatre: *Nevermore* (designer). Additional credits include designing for Artscentric, Faction of Fools, Interrobang Theatre Company, and The Strand Theatre Company.



**Venus Gulbranson** [she/her]  
(Lighting Designer) is a proud Filipino lighting designer based in NYC. Most notable works include Broadway's

*New York, New York* and Monumental Theatre Company's *tick, tick..BOOM!* for which she was nominated for a Helen Hayes Award. Venus has collaborated with Arena Stage, Signature Theatre, The Public, Ford's Theatre, The Kennedy Center, La Jolla Playhouse, Santa Fe Opera, and more. She is a member of United Scenic Artists 829 and is an advocate for underrepresented artists in the industry. Current obsessions include pasta dishes with fun shaped pastas, and keeping up a Duolingo streak with partner, Kiera.

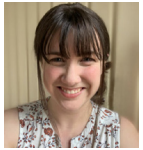
[venusgulbranson.com](http://venusgulbranson.com)

# PRODUCTION TEAM



**Madeline 'Mo' Oslejsek** [she/they] (Sound Designer) Baltimore/DC highlights include Woolly Mammoth Theatre Company:

*Incendiary* (Associate Designer); Chesapeake Shakespeare Co.: *Macbeth*, *HS Matinee*; UMBC: *The Grown-up*; Strand Theater: *R/J*, *The Lady Was a Gentleman*, *High School Coven*, *Frankenstein* (nominated for BEST SOUND DESIGN in Baltimore's BroadwayWorld Regional Awards). Upcoming projects: Interrobang Theatre Company: *I Will Eat You Alive* and a residency at The Voxel exploring theatre-in-the-dark. Credentials include a BA in Theatre from Ohio Wesleyan University and MA in Advanced Theatre Practice from the Royal Central School of Speech and Drama, University of London. [madelinesoslejsek.com](http://madelinesoslejsek.com)



**Amy Kellett** [she/her] (Props Designer) is excited to be back working with Constellation. Previous shows with them include *Moon Man*

*Walk* and *Once On This Island*. She has also designed props regionally for productions at Studio Theatre, Woolly Mammoth Theatre Company, Rep Stage, 1st Stage, Theater Alliance, NextStop Theatre Company, ArtsCentric, Pointless Theatre Company, GALA Hispanic Theatre, The Hub Theatre, Synetic Theater, and Young Playwrights' Theater. Her props and puppets can currently be seen on stage in the Kennedy Center's Family Theater in the production of *Look Both Ways*, coproduced with Theater Alliance. Some of the other hats Amy wears include being a puppeteer/puppet builder and a scenic charge.



**Sarah Beth Oppenheim** [she/her] (Movement and Intimacy Director): I hail from the Wild, Wild West where I never could color inside

the lines, so I read Steinbeck and became a modern dancer instead. I believe in deepest plie to bend traditions, antiracist pedagogy to bend academia, and dance as an everything salve. Educational letters in dance include BFA from SUNY Purchase and MFA from University of Maryland. I work as a Teaching Artist at Dance Place, Professorial Lecturer at American University and Maryland Opera Studio, and Artistic Director of Heart Stück Bernie. Recent and upcoming choreography includes Maryland Opera Studio: *Don Giovanni*, *Florencia en el Amazonas*; Heart Stück Bernie: *Many Extra Only More*, *Chicksaw*, *Wolver Maroon*. [sarahbethoppenheim.com](http://sarahbethoppenheim.com)



**Tori Schuchmann** [she/her] (Production Stage Manager) is a Maryland-based Stage and Production Manager, thrilled to return to CTC

this season! She serves as the Senior Project Manager for ViDCo (Virtual Design Collective) and the Production Manager for Andy's Summer Playhouse in Wilton, NH. Recent production credits include: Constellation Theatre Company: *The School for Lies*, *Once on This Island*; Duke Ellington School of the Arts: *Senior Showcase*, *Animal Farm*; Geffen Playhouse + TheaterWorks Hartford: *Someone Else's House*; Vineyard Theater: *On the Beauty of Loss*; Laboratory for Global Performance & Politics: *The Gathering*.



**Francesca Marie Chilcote** [she/her] (Associate Director) has previously assisted Director Nick Martin on Constellation's productions

of *Melancholy Play* and *Little Shop of Horrors*, and is excited to be exploring *Orlando* with him this season! She serves as the Co-Artistic Director for Faction of Fools Theatre Company, where she has most recently directed *Missed Connections* and *Love Like Tuesday*. She teaches at the Apex Arts magnet program in Anne Arundel County, and is an adjunct faculty member at Montgomery College. Training: BA in Theatre, The College of William and Mary. MFA in Physical Theatre, Accademia dell'Arte (Arezzo, IT). [francescamariechilcote.com](http://francescamariechilcote.com), @franny\_si (Instagram)



**Hansin Arvind** [he/him] (Assistant Stage Manager) is delighted to be working with Constellation Theatre Company for *Orlando*.

Recent credits include NextStop Theatre Company: *In The Heights* (Assistant Stage Manager) Capital Fringe: *The Road to the End* (Young Steve). Hansin has a BA in Theatre with a concentration in performance from George Mason University.

**Maria Mills** [she/her] (Assistant Production Manager) is delighted to return to Constellation Theatre Company again after having worked on *The School For Lies*. Recent theater credits include Kennedy Center TYA: *The Day You Begin*; GALA Hispanic Theatre: *Revoltoza*; Chautauqua Theater Company: *Indecent*, *Through the Eyes of Holly Germaine*. Maria also works in dance and opera, including shows with

the Washington Ballet: *Giselle*, *Swan Lake*, *Nutcracker*; Peabody Institute: *Peabody Dance Ensemble*; Maryland Lyric Opera: *Otello*, *Falstaff*. Maria has a BA in political science from American University.



**Jessica Utz** [she/her] (Assistant Costume Designer) is a DC based Costume Designer and Technician: Woolly Mammoth Theatre

Company: *Incendiary* (Associate Costume Designer); Perisphere Theater: *Hazardous Materials*, *The Storehouse* (Costume Designer); NextStop Theatre Company: *Freaky Friday*, *Lucky Stiff* (Costume Designer); Signature Theatre: *King of the Yees*, *Into The Woods*, *Rent* (Crafts Artisan): Arena Stage: *Angels In America* (Crafts Artisan). She also has many stitching credits at Arena Stage, Signature Theatre, The Washington National Opera, and Synetic Theater.



**Caroline Austin** [she/her] (Scenic Artist) is so excited to be back with Constellation Theatre Company this season in a larger capacity.

She is originally from Yorktown, VA and recently graduated from George Mason University with a BA in Theatre Studies and a minor in Design/Tech. Some of her recent production work includes Wolf Trap Opera: *Semele*, *Faust*, *Don Giovanni*; GALA Hispanic Theatre: *La Valentía*; Adventure Theatre: *The Fisherman and His Wife*; Woolly Mammoth Theatre Company: *My Mama and the Full Scale Invasion*. When she's not painting, Caroline can be found teaching acting and playwriting for K-12 school groups, gardening, or hiking with her dog.

# SHAKE THINGS UP & SUBSCRIBE TO SEASON 17!

SAVE UP TO 30% OFF SINGLE TICKETS



Our subscriptions are **FEE FREE**.

You can choose any performance date, enjoy the best seats in the house, make free exchanges, receive 25% off tickets for friends & family, **AND MORE!**

[CONSTELLATIONTHEATRE.ORG/SUBSCRIBE](http://CONSTELLATIONTHEATRE.ORG/SUBSCRIBE)



**Yaritza Pacheco** [she/they] (Scenic Charge Artist) is a proud Mexican-American multidisciplinary artist and designer born and

raised in the DC area. With a Bachelor's degree in Theatre and Studio Art from Radford University, she has been honing her craft since 2012. Her work spans across various disciplines, including sound design, set design and scenic painting. Her painting credits include: GALA Hispanic Theatre: *La Valentia, Principe y Principe*; Imagination Stage: *Mr. Popper's Penguins, P. Nokio, Corduroy*; Monumental Theatre: *Head Over Heels, Daddy Long Legs*. Additionally, Yaritza showcases her creativity through candle making and mixed media paintings available on her online store [yesterdayspresent.com](http://yesterdayspresent.com). Yaritza's dedication and talent have been recently recognized with Helen Hayes nominations for her sound and scenic designs, and she received the Outstanding Scenic Design award (Helen) for her work on *tick, tick... BOOM!* at Monumental Theatre Company.



**Reed Simiele** [he/him] (Head Electrician) is thrilled to be at Constellation Theatre for the first time. He is new to the DMV area, having recently spent time in Boston and Connecticut working at such regional theatres as SpeakEasy and Playhouse on Park. He is excited to work on *Orlando* and hopes you enjoy the show!



**E-hui** [she/her] (Light Board Programmer) is so delighted to be working on her first show with Constellation, and could not have asked

for a better team for her return to the DC theatre scene. Previous local design credits include Arts on the Horizon: *Sailing on String, Outside the Lines*; Nu Sass Productions: *Marx in Soho, The Ugly One, Exit Carolyn*; Mosaic Theater Company: *The Real Americans, Draw the Circle*; Pointless Theatre Company: *.d0t :: a RotoPlastic Ballet, A Very Pointless Holiday Spectacular*; The Welders: *To Tell My Story*; Avant Bard Theatre: *TAME.*; and Source Festival 2017. Portfolio: [e-hui.info](http://e-hui.info)



**Lillian Moki** [she/they] (Light Board Operator) is very excited to be working with Constellation Theatre as Light Board Operator for their production of *Orlando*. She has been an Electrician and Teaching Artist in the DC Metro area over the past few years working mostly with Signature Theatre, Shakespeare Theatre Company, and Woolly Mammoth Theatre Company. In addition, she is also an electrician for 4Wall Entertainment. Recently they have been a Lighting Board Op for Signature Theatre's productions of *The Color Purple* and *Which Way to the Stage*. Moki has a BA in Theatre from the University of Maryland College Park.

**Garrett Parker** [he/him] (Audio Engineer) has worked all over DC, including as an A1 at Shakespeare Theatre Company: *King Lear, Much Ado About Nothing*; and for concerts and television broadcasts at DAR Constitution Hall; Capital One Arena; and more. Garrett graduated from the Omega School for Audio Engineering and Technology in the spring of 2022.



**Damien Sedlak** [they/them] (Wardrobe) is delighted to be working with Constellation Theatre Company for the first time.

Local credits include Round House Theatre: *Ink*. They have a BA in Theater from Virginia Commonwealth University.

FEB 15 - MAR 17

A ROLLIICKING NEW MUSICAL!

INSPIRED BY SHAKESPEARE'S MEASURE FOR MEASURE

DESPERATE MEASURES

BOOK & LYRICS BY PETER KELLOGG

MUSIC BY DAVID FRIEDMAN

DIRECTED BY ALLISON ARKELL STOCKMAN

CONSTELLATION THEATRE COMPANY SEASON 17

#JoinTheAdventure

# SEASON 17 DONORS + SUPPORT

## Thank you to all our donors for being part of our Constellation!

This list acknowledges gifts received between: 07/01/2022 and 09/27/2023.

### INSTITUTIONAL SUPPORT

Artspace Immersion  
Awesome Foundation  
Anthony & Anna L. Carozza Foundation  
Bank of America  
DC Commission on the Arts and Humanities  
Destination DC  
John R. & Dorothy D. Caples Fund  
L.R.S. Group  
Miss Pixie's Furnishings & Whatnot  
National Endowment of the Arts  
Paul M. Angell Foundation  
Picard Kentz & Rowe LLP  
The Share Fund of the Community Foundation for the National Capital Region

### BIG DIPPERS

#### \$10,000+ SUPERNOVA

Anonymous  
Michael L. Burke & Carl W. Smith  
Susan L. Sanders  
Peter & Dyson Stockman

#### \$7,500+ NEBULA

Scott Chatham & Allan Badovinac  
Ian Shuman & Sarah Weiner

#### \$5,000+ MILKY WAY

Anonymous  
Laura Hart  
Matthew Haynie & Katie Halliday  
Judith Henderson  
Eugene & Dale Kenney  
Robert Stockman

#### \$2,500+ AURORA

Ken & Sheila Berman  
Kenyatta T. Brunson  
Jennifer C. Eller  
Scott Hahn  
Meg & John Hauge  
Sophie Lynn & David Frederick  
Lucinda Romberg  
Debodhonyaa Sengupta  
Sally Sloan  
Keiko Takagi  
Rew Zukosky

#### \$1,000+ ECLIPSE

Donald Adams & Ellen Maland  
Robert Bacon  
Nan Beckley  
Kenton & Susan Wooddell Campbell  
Jeff & Carolyn Crooks  
John Driscoll  
Myrna Fawcett  
Elisabeth French  
William J. Hackett  
Frona Hall  
Richard Hardy  
Jonathan Herz & Steve Hill

Lee Hollaar  
Alan King  
Renee Klish  
Barry Kropf  
Wes MacAdam  
Lynn Martin  
Bill & Louisa Newlin  
Carl & Margaret Pfeiffer  
Rajeev Ramchand  
Nathan Rickard  
Edgar Smith  
Leslie C. Taylor  
Carolyn L. Wheeler  
Beverly & Christopher With  
Maya & Frederick Wynn

### LITTLE DIPPERS

#### \$500+ PLANET

Mary Hannah Arnot  
Carol & Will Cooke  
Stephen Ellis  
Vicki R. Herrmann  
Winton Matthews, Jr.  
Judy & Ed Mrocicka  
Emeline M. Otey  
Stan Peabody  
Howard Pittman  
Aron & Karen Primack  
Terry Quist  
The Savada-Stevenson Family  
Kristina Schaefer  
Linda W. Sorkin  
Alice P. Watson  
Mary Ann Wren

#### \$250+ FULL MOON

Judith Bernardi  
Bill Bratton  
Bob & Andrea Cali  
Katy & Dan Carkuff-Corey  
Davis-Brannan Family  
Alison Drucker & Tom Holzman  
Rolando Fuentes & Daniel Evans  
Erin D. Drake  
Tracy Fisher  
Lewis Freeman & Gretta Sandberg  
Alexandra Gerber  
Edward Gramlich  
Allen & Sallie Greenough  
Tim Gribben  
John Hetrick, Jr.  
Jurate & Carl Landwehr  
Harlene Leahy  
Jim & Irene MacDonald  
Jenny Male  
Sandy McKenzie  
Rebecca & Hugo Medrano  
Naomi Robin & Gerald Gleason  
Pat Murphy Sheehy  
Jonathan Siegel & Michelle Girvan  
Terry Theologides & Deb Rodriguez  
Peter Threadgill  
Eugene Versluysen & Jane Cave  
Daniel Vine  
Patricia Yates

#### \$100+ COMET

Kristin Abkemeier  
Suzanne Agins  
Bill & Amy Alexander  
Sanjay Altekari  
Allan Armus  
Randy William Ash  
Khadija Barkley  
Bruce & Mary Josie Blanchard  
Crystal Blyler

Nancy Breslin  
Marc Difazio  
Mark Diskin  
Chuck Goldfarb & Bo Hong  
Sally Greenberg  
Terrence Heubert  
John & Marie Himel-Butler  
Neelam Ihsanullah  
Peter & Violette Jacobson  
Debby & Stephen Jencks  
Margaret C. Jones  
James & Catherine Jordan  
Tatiana Karpova  
Marion Key  
Debra Klimkiewicz  
David B. Levine & Judith H. Katz  
Abel Lopez  
Keith Miller  
Mimi Montgomery  
Alanna Mowrey  
Carl & Undine Nash  
Marc Okrand  
Nick Olcott  
Kevin Parker  
Sara Parker  
Raymond & Molly Ruppert  
Blaise Scinto  
Kristin Scotchmer  
Corinne Smith  
Mary Hall Surface  
Ed Szrom & John Geiger  
Rita Tehan  
Gerry Widdicombe  
Gregory Williams  
Elliot Williamson  
Lois Wyatt  
Patty Zweibel

#### \$50+

Sarah Aderholdt  
Brian & Dorothy Altmiller  
Amy Austin  
Amit Bagchi  
Cecily Baskir & John Freedman  
Merideth Bentley

Randy Carswell  
Nancy A. Castell  
Thomas Chapman  
Don Chatham  
Laurel Cullen  
Steven Eau Claire  
Martin & Evelyn DePalma  
Debra Fairweather  
Martha Feldman  
Gwendolyn Grastorf  
David Hatfield  
August & Clare Imholtz  
Barbara L. Jarvis  
Andy King  
Christine Lange  
Linda Larson  
Vicki Lindsay  
Richard J. Metzger & Camilla J. Nilles  
Eric Meyer  
Bruce Miller  
Oliver & Kit Moss  
Gillian Moorhead  
Catrina Moran  
Tim & Anne Murphy  
Timothy Nelson  
Andrea Pedolsky  
Patrick Richardson  
Veronique Tran  
Renate Wallenberg  
Renee Weitzner  
Kathleen Wells  
Clifford Whitham

### EVERY EFFORT HAS BEEN MADE TO ENSURE THAT THIS LIST IS ACCURATE.

If your name is misspelled or omitted, please accept our apologies and email [julia.harris@constellationtheatre.org](mailto:julia.harris@constellationtheatre.org) or call (202) 204-7741.



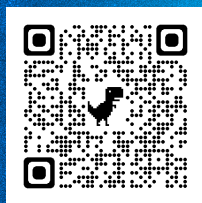
**"SOME OF THE BEST, MOST ADVENTUROUS, MOST RELIABLE WORK IN TOWN, ALL PRESENTED ON AN EPIC SCALE WITH A LEVEL OF INTIMACY THAT CAN'T BE BEAT." - METRO WEEKLY**

## **Will you make a gift and join our Constellation?**

Become part of our vibrant artistic community and enjoy a front-row seat to fun behind-the-scenes events like our first looks, open technical rehearsals, and exclusive cocktail parties. Please join our Constellation today and help us make theatre that is bold, ambitious, and most of all, **EPIC!**

### **HOW TO GIVE:**

- Drop a few bills in the vase in the lobby tonight
- Use a credit card at the box office
- Go online to **ConstellationTheatre.org/Donate**
- Mail a check to Constellation Theatre Company:  
**1835 14th Street NW, Washington, DC 20009**



**CONSTELLATION  
THEATRE  
COMPANY**



**WWW.CONSTELLATIONTHEATRE.ORG**